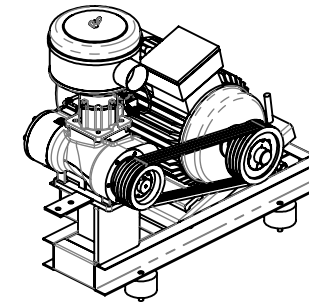
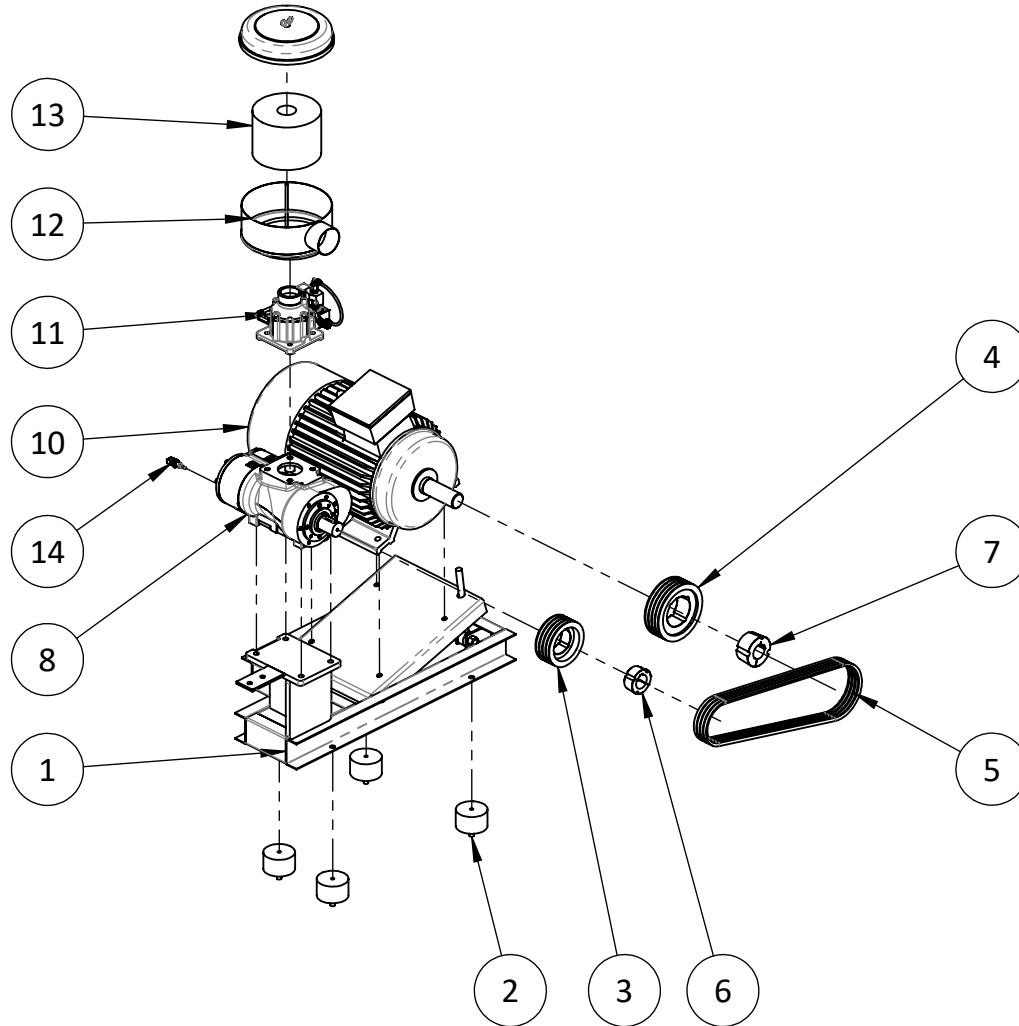
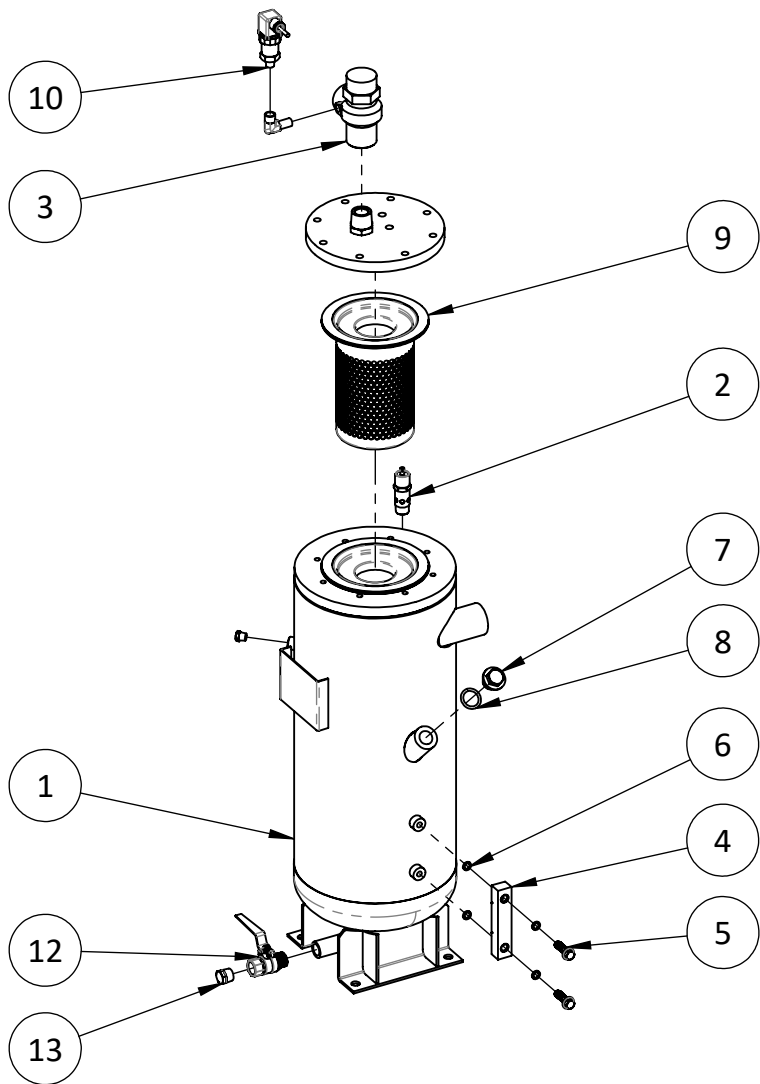
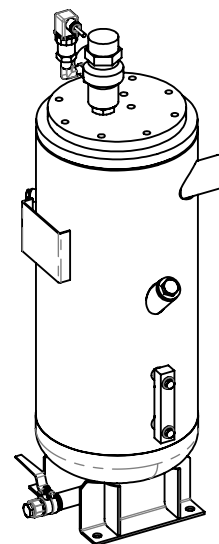


POS-NR.	MENGE	Bezeichnung	Description	A-Nr./No.
1	1	Unterbau mit Wippe	Shockproof frame	01122160
2	4	Gummipuffer D85x52_M12	Rubber buffers D85x52_M12	01550020
3	1	Keilriemenscheibe SPZ125-04-2012	Belt pulley SPZ125-04-2012	10040060
4	1	Keilriemenscheibe SPZ160-04-2517	Belt pulley SPZ160-04-2517	10040190
5	4	Keilriemen 3VX530 - XPZ1337	Belt 3VX530 - XPZ1337	10030040
6	1	Taperlock-Buchse 2012-40	Taper lock bush 2012-40	10050040
7	1	Taperlock-Buchse 2517-42	Taper lock bush 2517-42	10050050
8	1	Verdichterstufe AC-130	Air end AC-130	02000040
9	1	Wellendichtsatz AC-130	Shaft seal set AC-130	55020020
10	1	IE3-Motor 18,5 kW	IE3-Motor 18,5 kW	03000090
11	1	Ansaugregler AIV-50 R-L-SG-HD	Suction regulator AIV-50 R-L-SG-HD	08010060
12	1	Luffiltergehäuse kpl.	Air filter assembly cpl	09010060
13	1	Luffiltereinsatz 583330	Air filter insert 583330	09018060
14	1	Temperatursensor R1_4 L=4.0MHC	Temperature sensor R1_4 L=4.0MHC	08060041

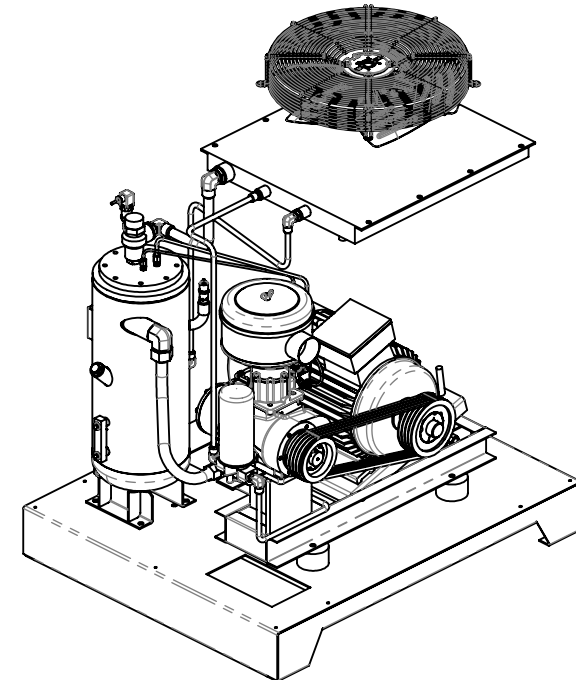
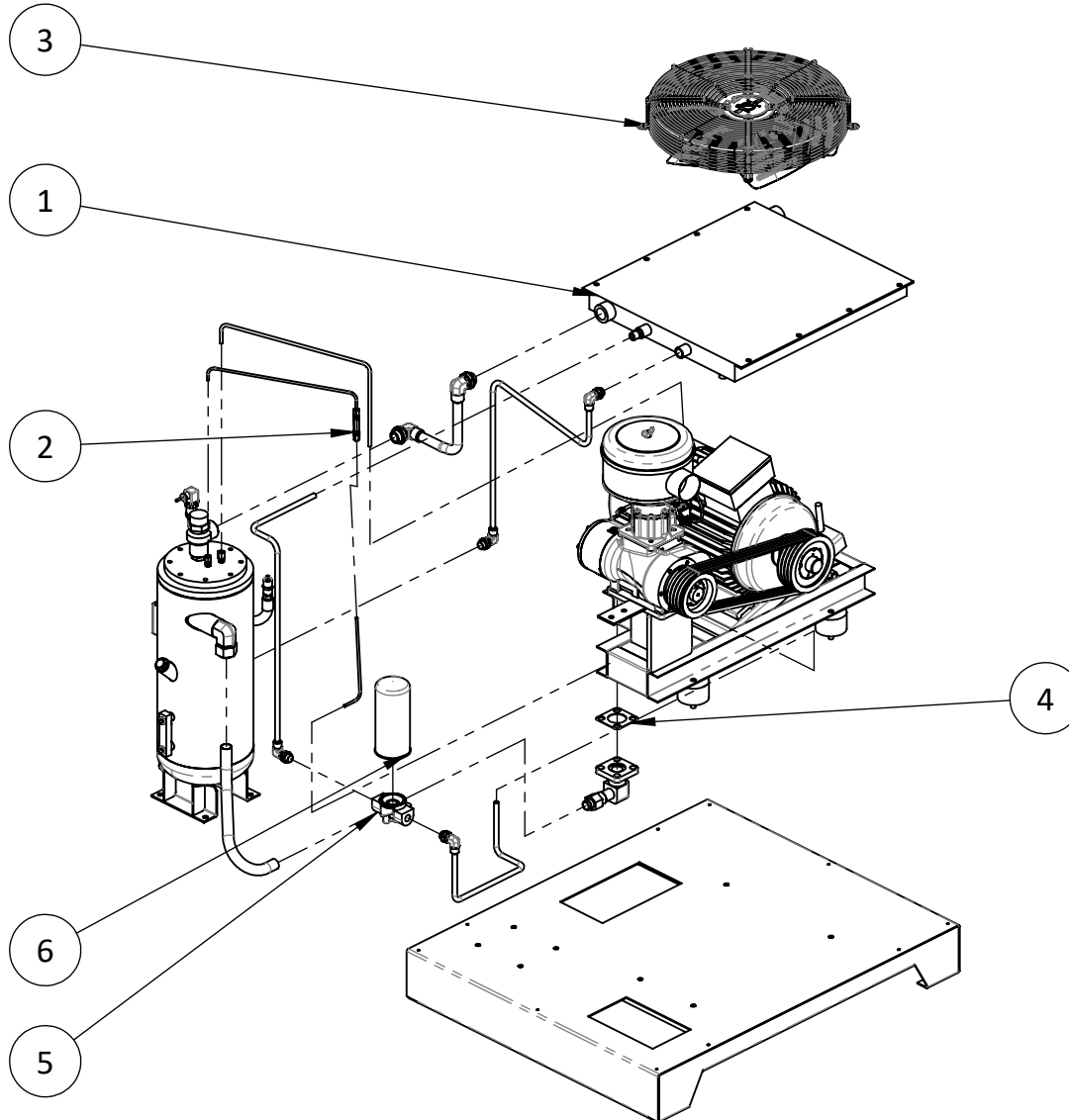




POS-NR.	MENGE	Bezeichnung	Description	A-Nr./No.
1	1	Ölbehälter LCN 28-12,5-A	Oil receiver LCN-28-12,5	05010311
2	1	Sicherheitsventil 13,8 bar CAXL4	Safety valve 13,8 bar CAXL4	08020120
3	1	Mindestdruckventil MPV-25A-Y	Minimum pressure valve MPV-25A-Y	08070060
4	1	Ölstandsauge 20-40HP	Oil level glass 20-40HP	05017040-2021
5	2	Hohlschraube ÖB, M10x35	Banjo bolt oil level glass, M10x35	05017050
6	4	Dichtring 14x10,2x1,9	Sealing ring 14x10,2x1,9	13200020
7	1	Verschlussschraube ÖB M24x2	Locking screw oil receiver M24x2	05016020
8	1	O-Ring 26x34x4	O ring 26x34x4	13200030
9	1	Separatorbox 5631113200	Separator 5631113200	09030060
10	1	Drucksensor PT-309-16 R0,25	Pressure sensor PT-309-16 R0,25	08040031
11	1	Manometer 0 - 1,6 MPa, R 0,25, Glycerin	Pressure gauge 0 - 1,6 MPa, R 0,25, Glycerin	05018040
12	1	Kugelhahn R 1/2 (AG) - Rp 1/2 (IG)	Ball valve R 1/2 (AG) - Rp 1/2 (IG)	05019010
13	1	Verschlussschraube R 1/2	Locking screw R 1/2	05016010



POS-NR.	MENGE	Bezeichnung	Description	A-Nr./No.
1	1	Kühler HDL30B	radiator HDL30B	04010060
2	1	Rückschlagventil LHY-1-DN 1,2	Non-return-valve LHY-1-DN 1,2	08050110
3	1	Lüfter YSWF102L45P4-570N-500 S	Fan YSWF102L45P4-570N-500 S	07010060
4	1	Flachdichtung 85x85x2	Flat gasket 85x85x2	13200040
5	1	Ölfilterhalterung für Ölfilter 09020020	Oil filter holder for oil filter 09020020	08080020
6	1	Ölfilter 56330	Oil filter 56330	09020040



POS-NR.	MENGE	Bezeichnung	Description	A-Nr./No.
1	1	Steuerung C70	Controller C70	06016072
2	1	Not-Aus-Schalter	Emergency button	06401010
3	1	Frequenzumrichter MD500ET18.5G	Inverter MD500ET18.5G	06023086
4	1	Trafo BK-100VA 400/210/20V	Transformer BK-100VA 400/210/20V	06040020
5	1	Leistungsschutz LC1-N0910M5N	Contacteur LC1-N0910M5N	06030190
6	1	Sicherungshalter 10x38	Fuse holder 10*38	06050020
7	1	Sicherungsautomat C6A	Fuse C6A	06050120
8	2	Verdrahtungsklemmen EK 6_35 - 6mm	Wiring row EK 6_35 - 6mm	06120228
9	1	Stromwandler 40A	mutual inductor 40A	06070010
10	1	Klemmleiste	Wiring row	06150000
11	2	Klemmenhalter SS11	Terminal retainer SS11	06120233

